



Datenblatt - Fiche technique - Data sheet

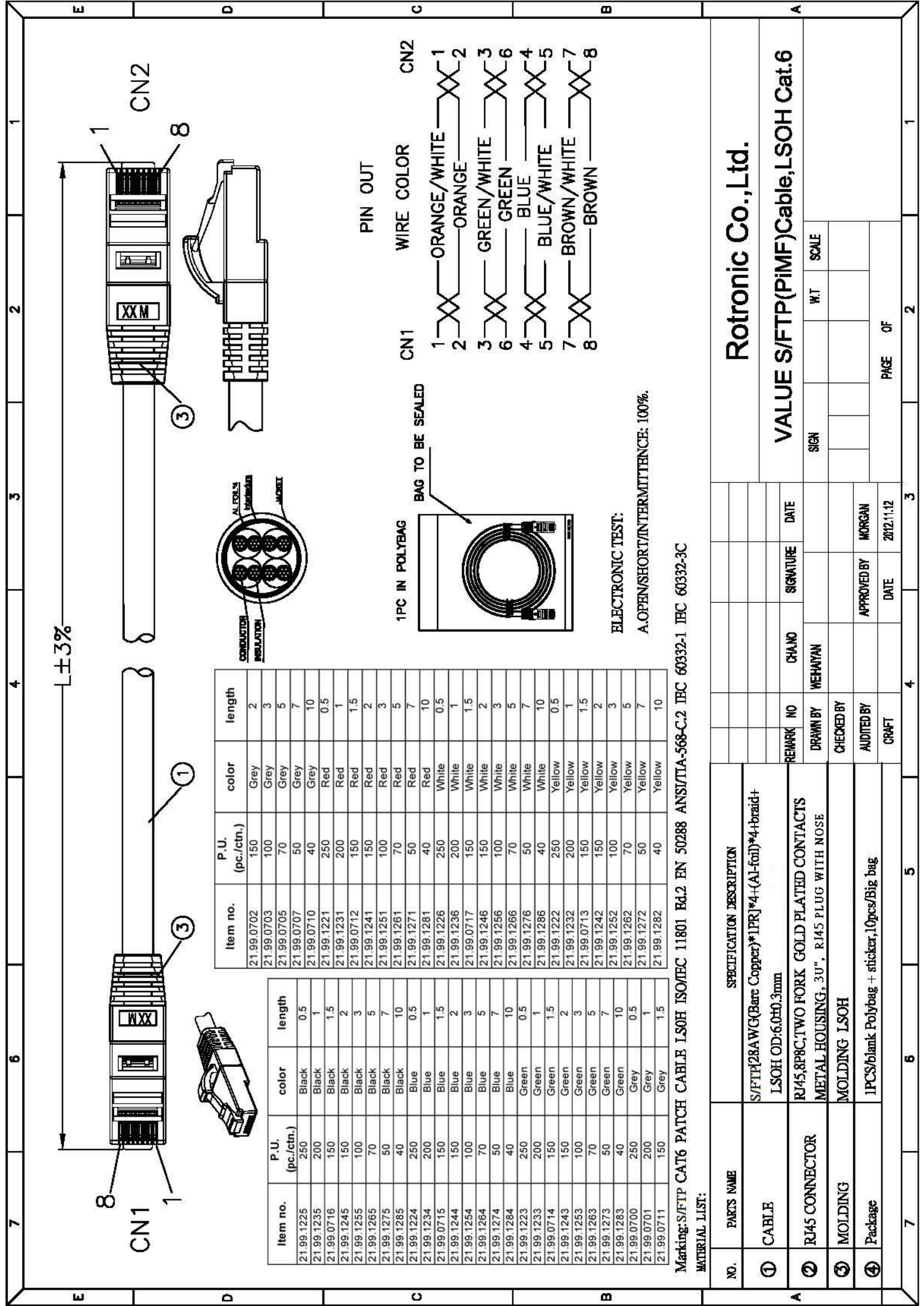
**21.99.0707**



VALUE S/FTP-(PiMF-)Patchkabel Kat.6, LSOH, grau, 7m

Cordon VALUE Cat.6 S/FTP LSOH gris, 7,0m

VALUE S/FTP Patch Cord Cat.6, halogen-free, grey, 7 m

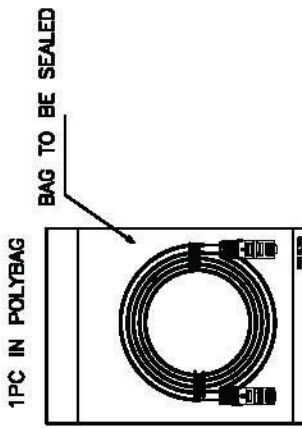


Item no.	P.U. (pc./ctn.)	color	length
21.99.0702	150	Grey	2
21.99.0703	100	Grey	3
21.99.0705	70	Grey	5
21.99.0707	50	Grey	7
21.99.0710	40	Grey	10
21.99.1221	250	Red	0.5
21.99.1231	200	Red	1
21.99.0712	150	Red	1.5
21.99.1241	150	Red	2
21.99.1251	100	Red	3
21.99.1261	70	Red	5
21.99.1271	50	Red	7
21.99.1281	40	Red	10
21.99.1226	250	White	0.5
21.99.1236	200	White	1
21.99.0717	150	White	1.5
21.99.1246	150	White	2
21.99.1256	100	White	3
21.99.1266	70	White	5
21.99.1276	50	White	7
21.99.1286	40	White	10
21.99.1222	250	Yellow	0.5
21.99.1232	200	Yellow	1
21.99.0713	150	Yellow	1.5
21.99.1242	150	Yellow	2
21.99.1252	100	Yellow	3
21.99.1262	70	Yellow	5
21.99.1272	50	Yellow	7
21.99.1282	40	Yellow	10

Item no.	P.U. (pc./ctn.)	color	length
21.99.1225	250	Black	0.5
21.99.1235	200	Black	1
21.99.0716	150	Black	1.5
21.99.1245	150	Black	2
21.99.1255	100	Black	3
21.99.1265	70	Black	5
21.99.1275	50	Black	7
21.99.1285	40	Black	10
21.99.1224	250	Blue	0.5
21.99.1234	200	Blue	1
21.99.0715	150	Blue	1.5
21.99.1244	150	Blue	2
21.99.1254	100	Blue	3
21.99.1264	70	Blue	5
21.99.1274	50	Blue	7
21.99.1284	40	Blue	10
21.99.1223	250	Green	0.5
21.99.1233	200	Green	1
21.99.0714	150	Green	1.5
21.99.1243	150	Green	2
21.99.1253	100	Green	3
21.99.1263	70	Green	5
21.99.1273	50	Green	7
21.99.1283	40	Green	10
21.99.0700	250	Grey	0.5
21.99.0701	200	Grey	1
21.99.0711	150	Grey	1.5

PIN OUT

CN1	WIRE COLOR	CN2
1	ORANGE/WHITE	1
2	ORANGE	2
3	GREEN/WHITE	3
6	GREEN	6
4	BLUE	4
5	BLUE/WHITE	5
7	BROWN/WHITE	7
8	BROWN	8



ELECTRONIC TEST:  
A.OPEN/SHORT/INTERMITTENCE: 100%.

Marking:S/FTP CAT6 PATCH CABLE LSOH ISO/IEC 11801 Ed.2 EN 50288 ANSI/TIA-568-C.2 IEC 60332-1 IEC 60332-3C

MATERIAL LIST:

NO.	PARTS NAME	SPECIFICATION DESCRIPTION
①	CABLE	S/FTP28AWG(Bare Copper)*1PR]*4-(Al-foil)*4-braid+ LSOH OD:6.0H0.3mm
②	RJ45 CONNECTOR	RJ45,8P8C,TWO FORK GOLD PLATED CONTACTS METAL HOUSING, 3U", RJ45 PLUG WITH NOSE
③	MOLDING	MOLDING LSOH
④	Package	1PCS/blank Polybag + sticker,10pcs/Big bag

Rotronic Co.,Ltd.

VALUE S/FTP(PiMF)Cable,LSOH Cat.6

REMARK	NO	CHANO	SIGNATURE	DATE	SIGN	W/T	SCALE
DRAWN BY		WEHAYAN					
CHECKED BY							
AUDITED BY			APPROVED BY	MORGAN			
CRAFT			DATE	2012.11.12			